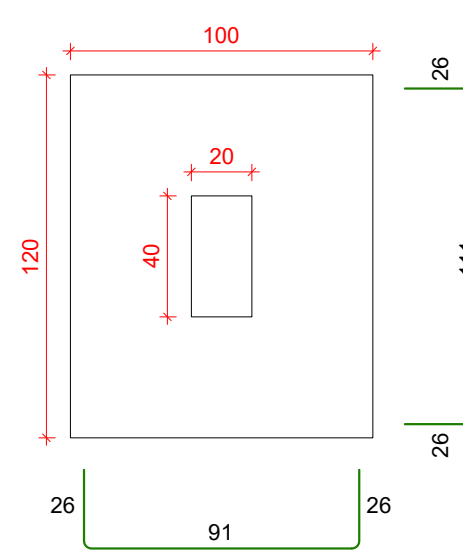
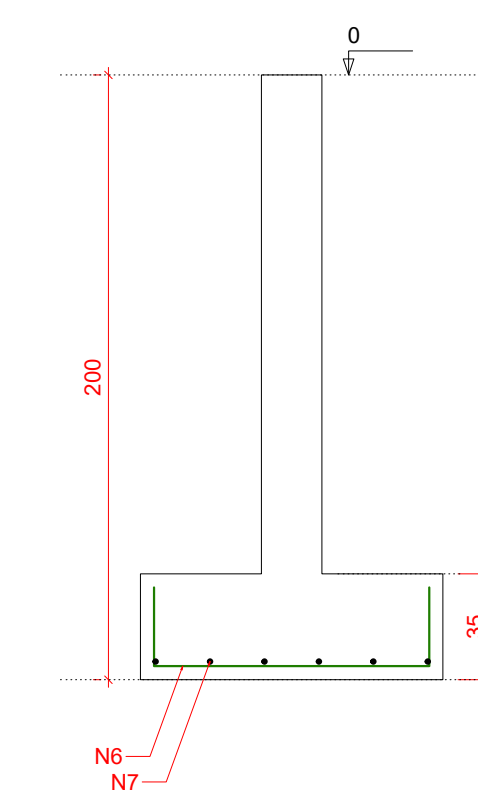


Planta de Formas e Locação  
escala 1:50

S1=S2=S3=S4=S5  
PLANTA  
ESC 1:25



CORTE  
ESC 1:25



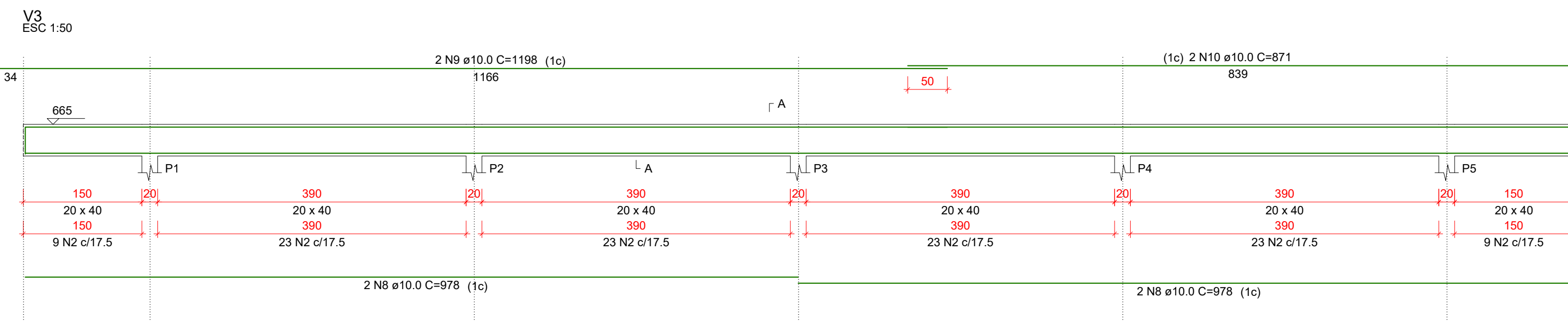
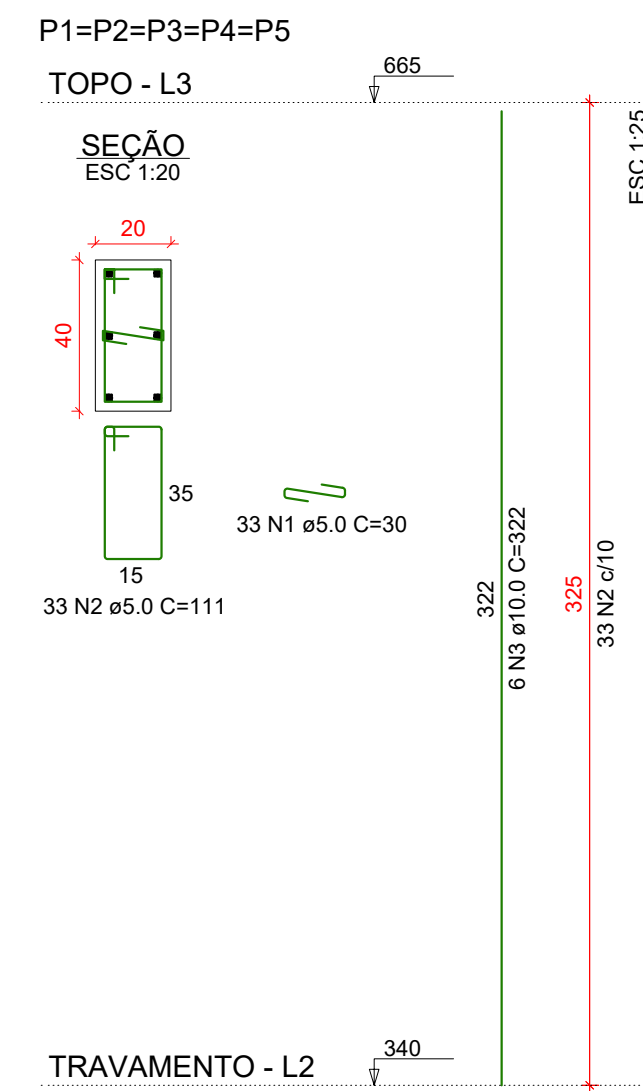
RELAÇÃO DO AÇO

5xP1-L3 5xS1-L1 V1	5xP1-L2 V3	5xP1-L1 V2	C.TOTAL (cm)	
AÇO	N	DIAM (mm)	QUANT	C.TOTAL (cm)
CA60	1	5.0	435	13050
CA50	2	5.0	765	84915
	3	10.0	30	322
	4	10.0	30	373
	5	10.0	30	247
	6	10.0	30	138
	7	10.0	30	158
	8	10.0	12	978
	9	10.0	6	1198
	10	10.0	6	871

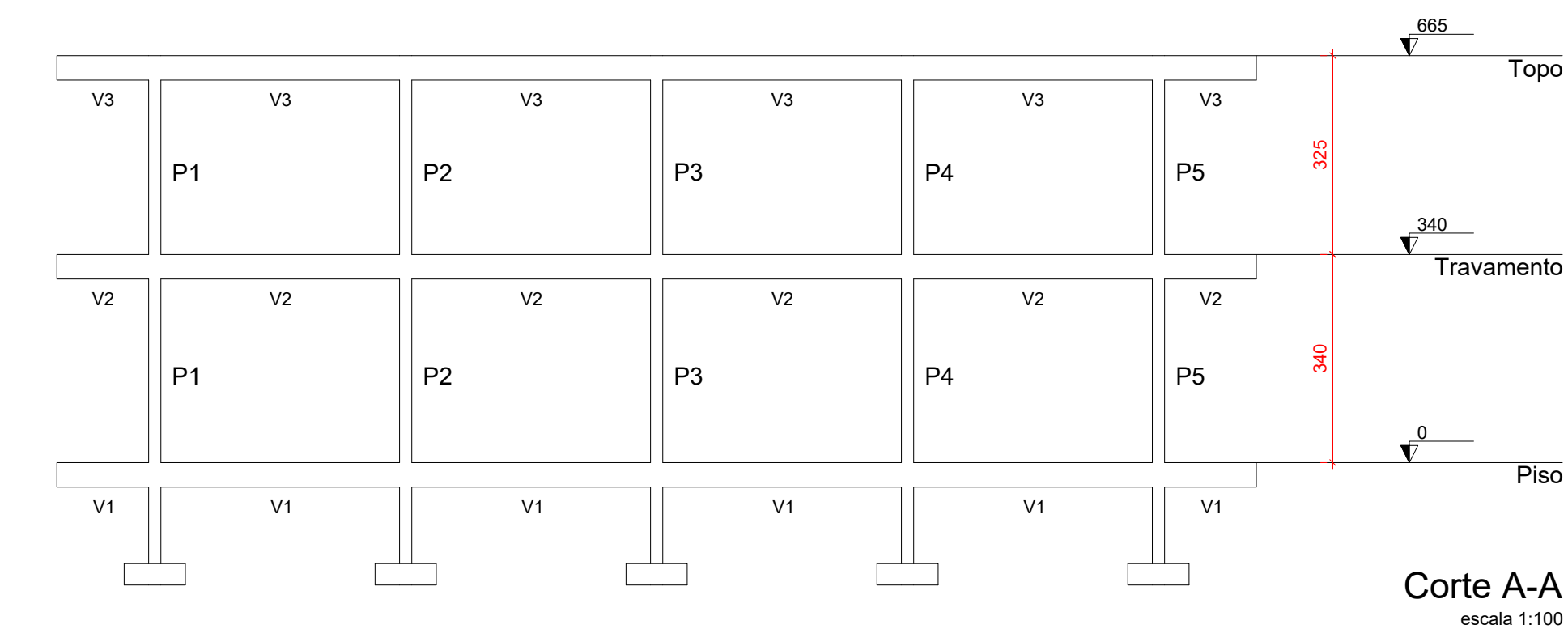
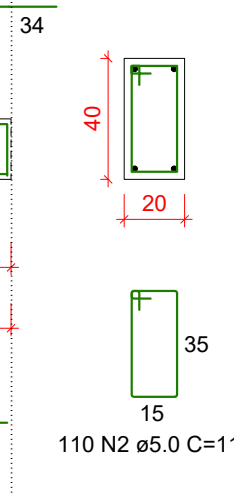
RESUMO DO AÇO

AÇO	DIAM (mm)	C.TOTAL (m)	PESO (kg)
CA50	10.0	612.9	377.9
CA60	5.0	979.6	151
PESO TOTAL (kg)			
CA50		377.9	
CA60		151	

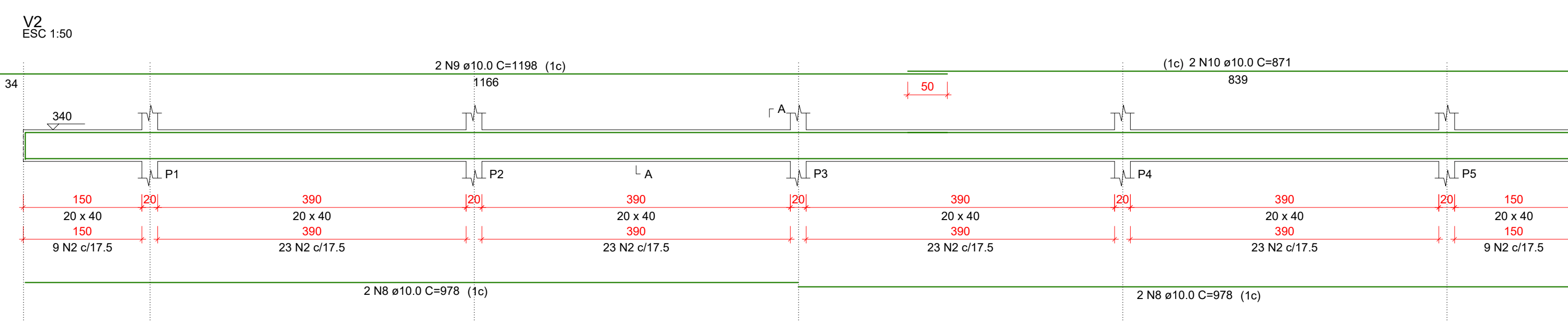
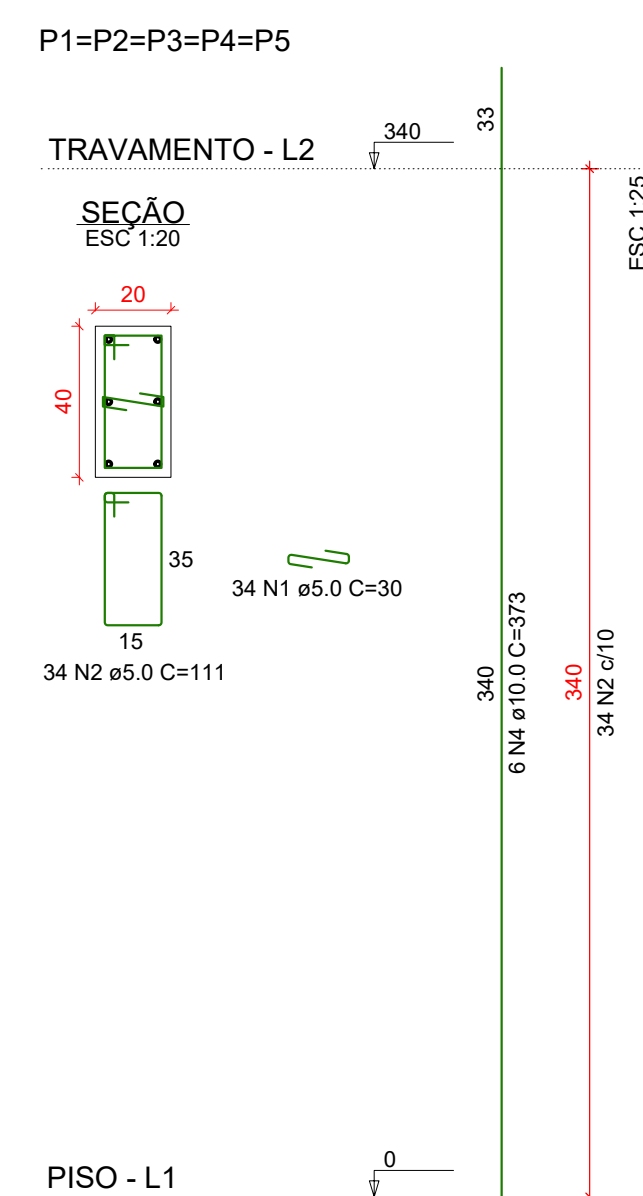
Volume de concreto (C-30) = 10.26 m³  
Área de forma = 118.40 m²



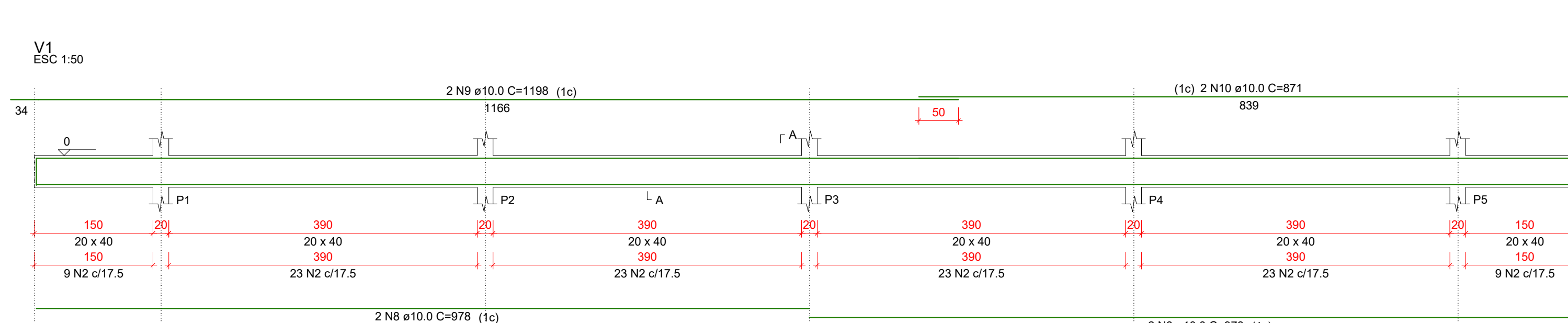
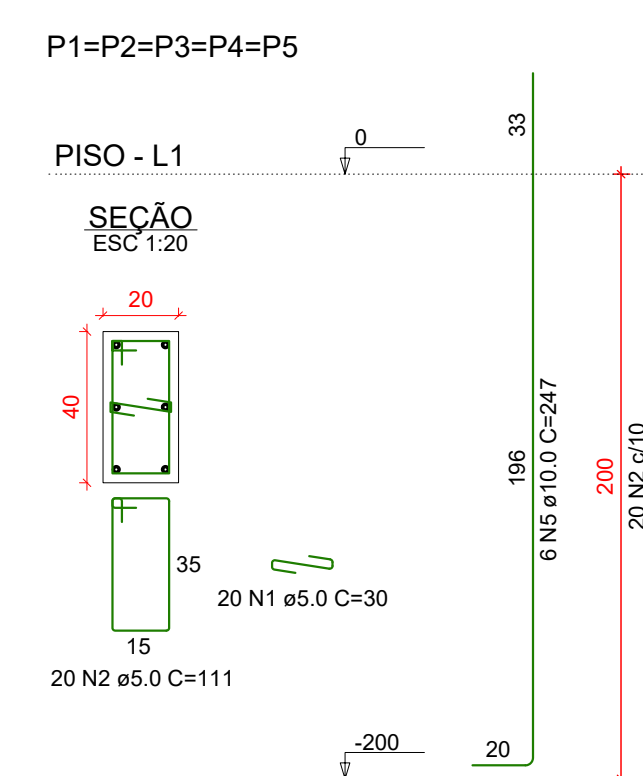
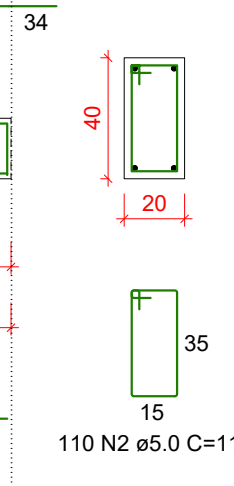
SEÇÃO A-A  
ESC 1:25



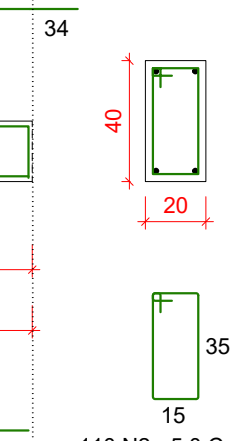
Corte A-A  
escala 1:100



SEÇÃO A-A  
ESC 1:25



SEÇÃO A-A  
ESC 1:25



Rua Roberto Trompowski, 68 - 2º andar / Tel: 49 3522-2800 - www.ammoc.org.br - e-mail: ammoc@ammoc.org.br - Joinville/SC

PREFEITURA MUNICIPAL DE OURO

Obra: PROJETO DE FECHAMENTO QUADRA KLEINUBING

Local da Obra: RUA B - LOTEAMENTO KLEINUBING  
Conteúdo: PLANTA DE FORMAS, CORTE E DETALHAMENTOS

Responsável Técnico:  
Ana Júlia U. de Carvalho - Eng. Civil - Crea/SC 105.295-8  
André Brito Dotli - Eng. Civil - Crea/SC 162.237-5  
Denir Narcizo Zullian - Eng. Civil - Crea/SC 50.805-8  
Fábio Zilio Caron - Eng. Civil - Crea/SC 140.642-7  
Lucas F. Balestrin - Eng. Agrônomo - Crea/SC 156.743-7  
Max Mooshammer - Eng. Civil - Crea/SC 139.164-0  
Suellen Karine Cervelin - Eng. Civil - Crea/SC 166.933-0

EST  
01/01

Quaisquer alterações consulte os responsáveis técnicos:

Assinatura Responsável Técnico: Assinatura Prefeito(a) Municipal  
Desenho: Fábio Z. Caron Data: Junho / 2022 Escala: Indicada (s) Área Total:

ESTRUTURAL