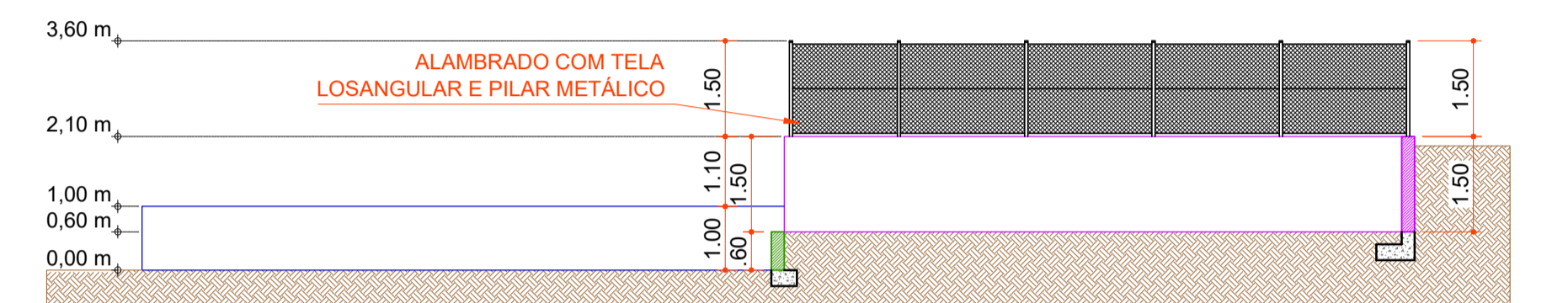
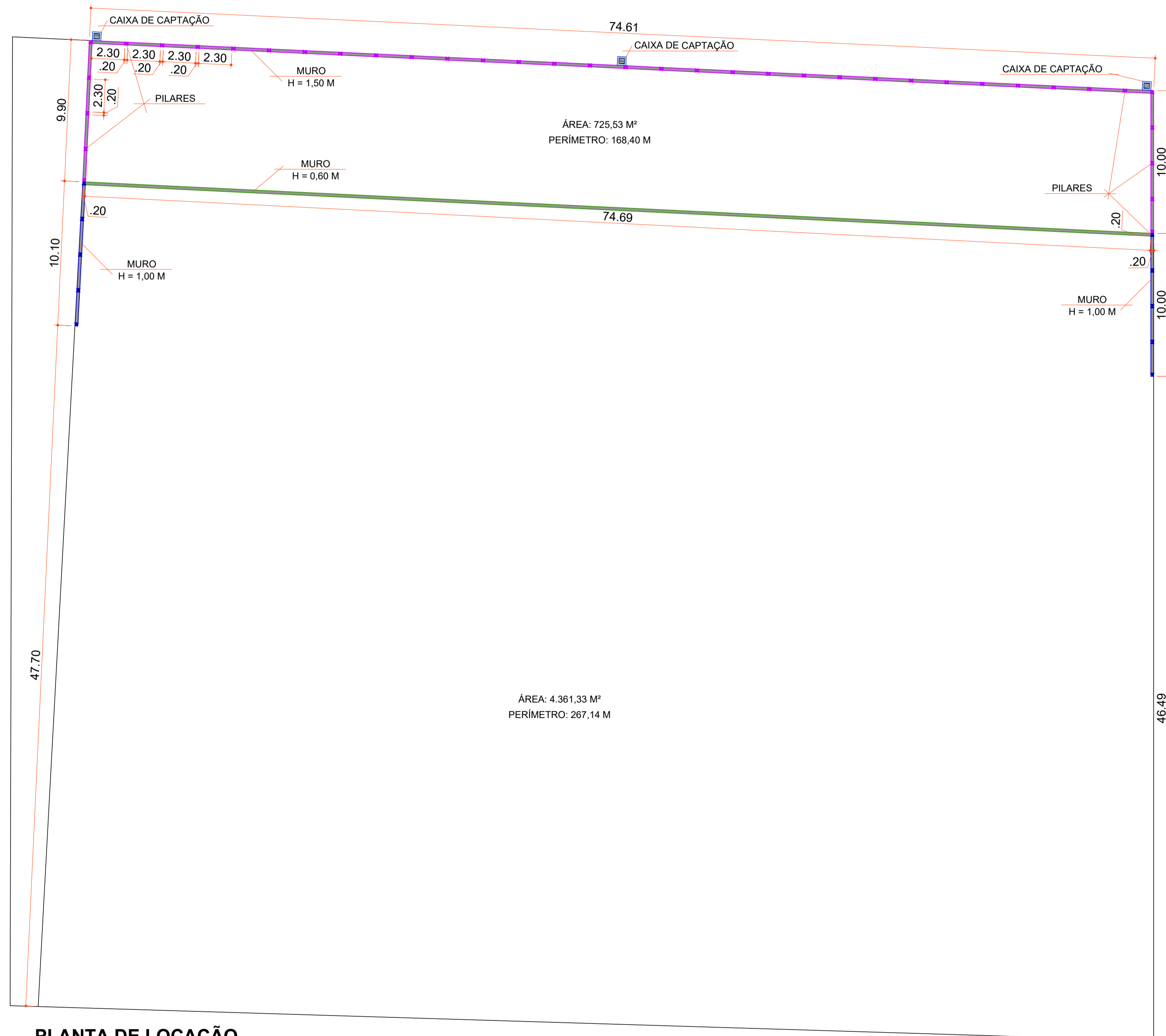


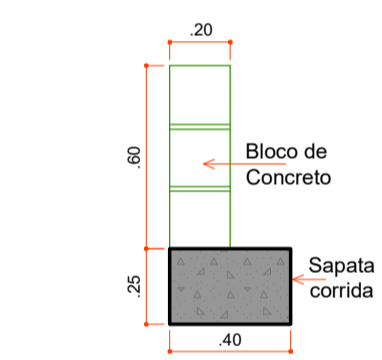
CORTE FRONTAL
Escala: 1:100



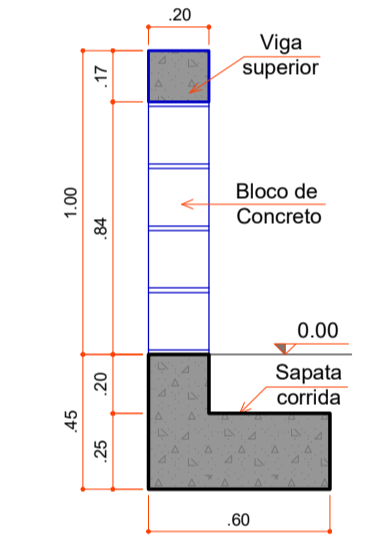
CORTE LATERAL
Escala: 1:100



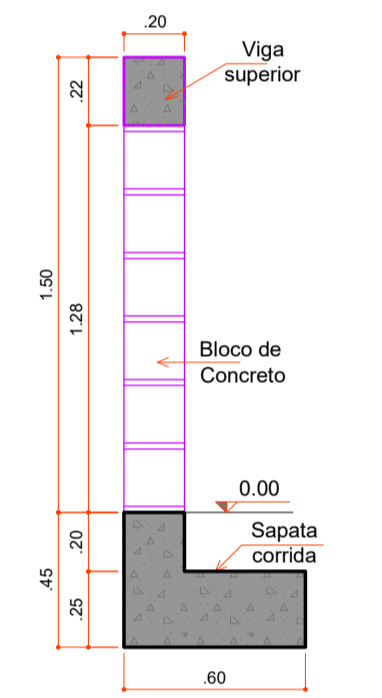
PLANTA DE LOCAÇÃO
Escala: 1:200



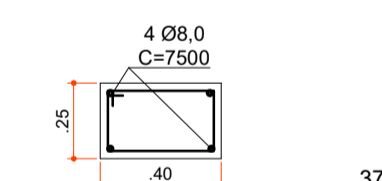
DETALHE MURO h = 60 cm
Escala: 1/25



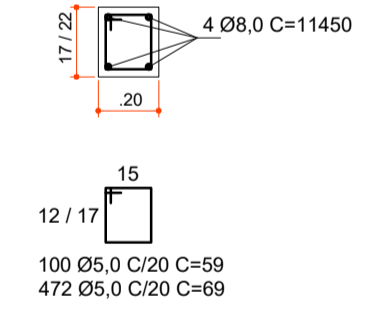
DETALHE MURO h = 100 cm
Escala: 1/25



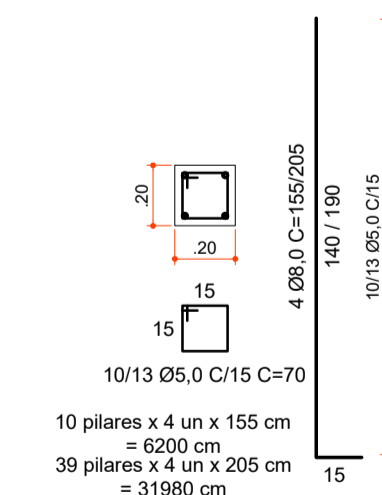
DETALHE MURO h = 150 cm
Escala: 1/25



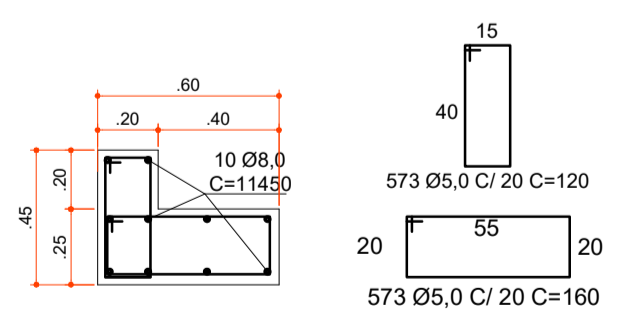
DETALHE SAPATA CORRIDA 01
Escala: 1/25



DETALHE VIGA AÉREA
Escala: 1/25



DETALHE PILARES
Escala: 1/25



DETALHE SAPATA CORRIDA 02
Escala: 1/25



Rua Roberto Trompowski, 69 2º andar Tel: 49 3522 2800 Fax: 35220235 www.ammoc.com.br e-mail ammoc@ammoc.com.br - JOIÇABA SC

PREFEITURA MUNICIPAL DE OURO

Obra:	MURO DE CONTENÇÃO NO CEMITÉRIO MUNICIPAL	Conteúdo:	PLANTA BAIXA CORTE FRONTAL E LATERAL DETALHES
Referência:	PROJETO ARQUITETÔNICO		
Local da Obra:	RUA GOVERNADOR JORGE LACERDA - BAIRRO CENTRO		
Quaisquer alterações consulte os responsáveis técnicos			
Assinatura Responsável Técnico		Assinatura Prefeito(a) municipal	
Projeto:	ANA JÚLIA UNGERICH - ENG. CIVIL - CREA/SC 105.295-8 ANDRÉ BRITO DOTTI - ENG. CIVIL - CREA/SC 162.237-5 DENIR NARCIZO ZULIAN - ENG. CIVIL - CREA/SC 50.805-8 MAX MOOSHAMMER - ENG. CIVIL - CREA/SC 139.964-0	Prancha:	ARQ ÚNICA
Desenho:	ANDRÉ DOTTI	Data:	JULHO / 2020
Escala:	INDICADA(S)	Área Total:	