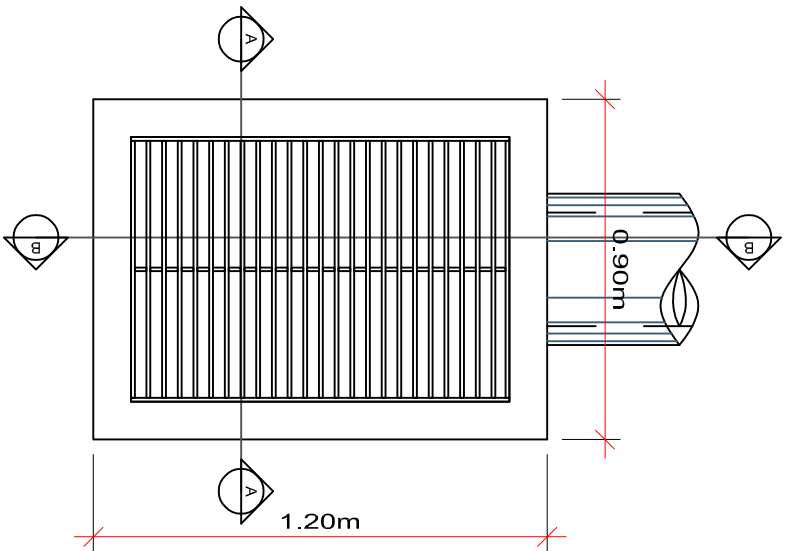
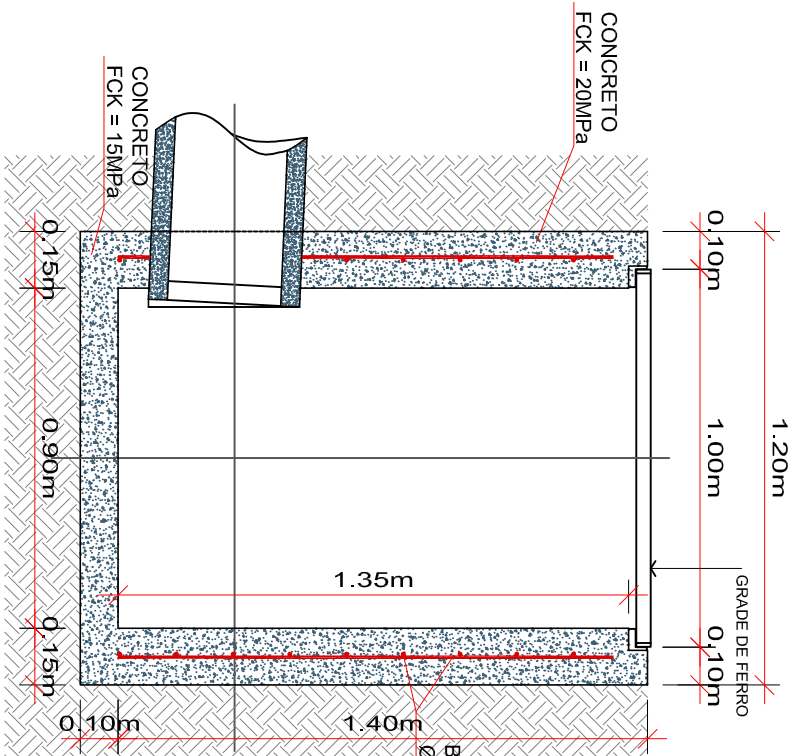


BOCA DE LOBO - TIPO I - Ø300mm/Ø400mm



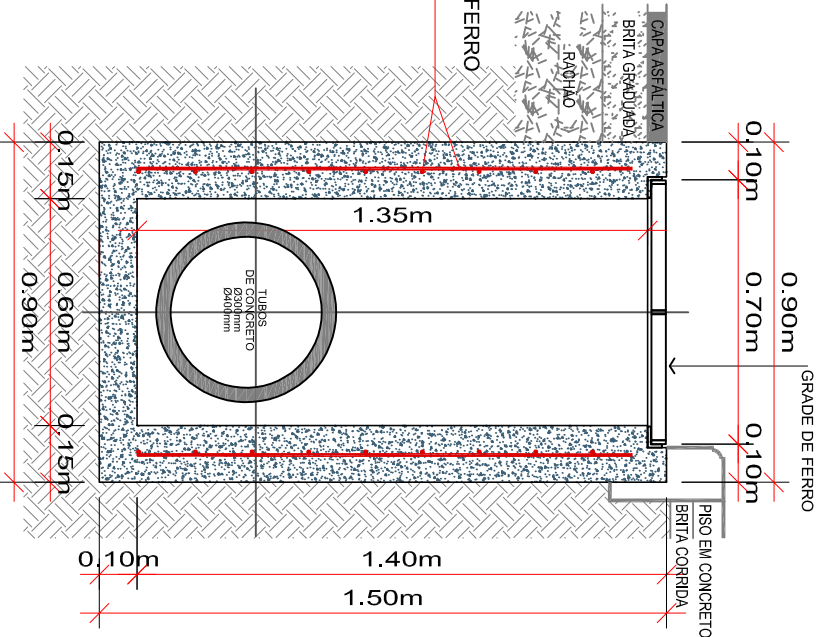
PLANTA BAIXA

Escala 1/20



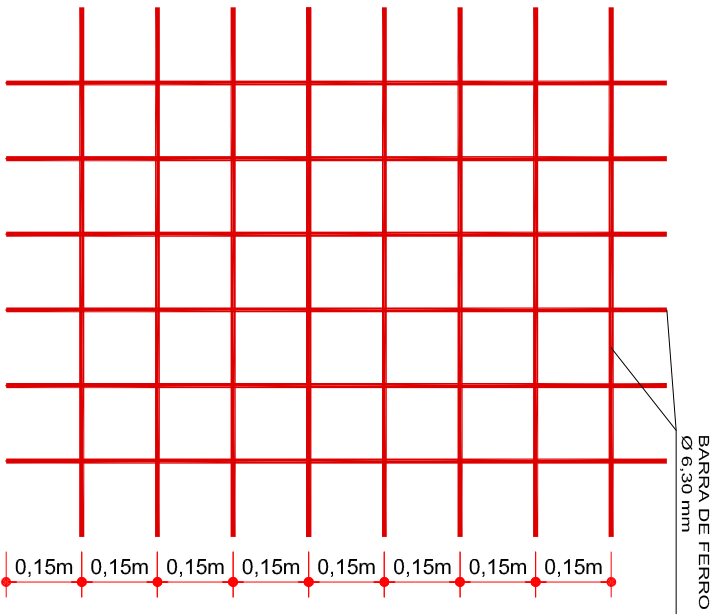
CORTE AA

Escala 1/20



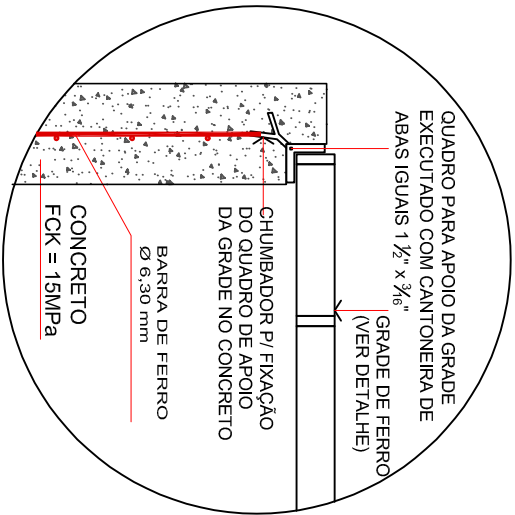
CORTE BB

Escala 1/20



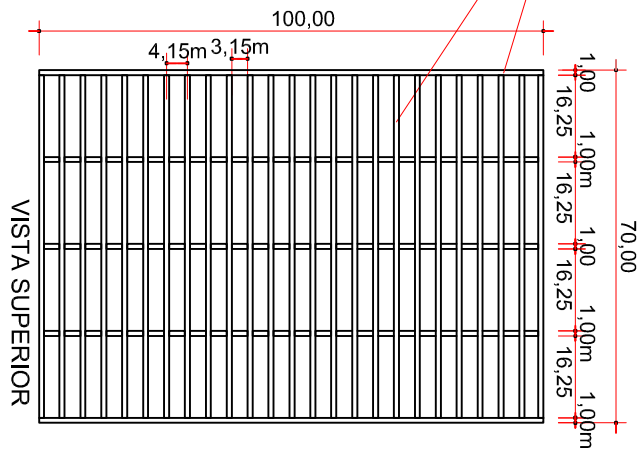
DETALHE DA ARMADURA

Escala 1/15



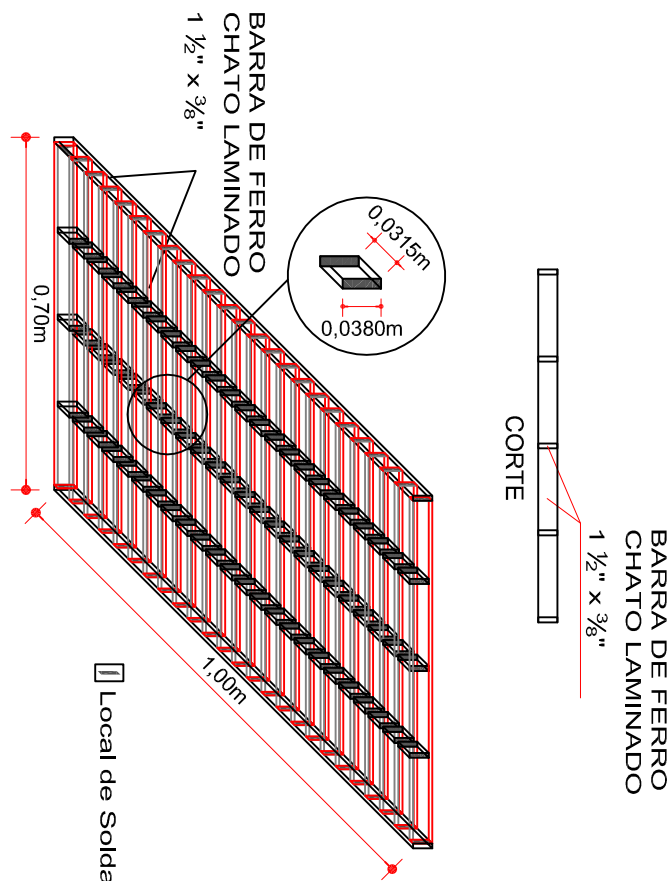
DETALHE APOIO DA GRADE

Escala 1/15



DETALHE DA GRADE

Escala 1/15



PERSPECTIVA DA GRADE

Escala 1/10

ENGENHEIRO RESPONSÁVEL

PREFEITO MUNICIPAL



Projeto: ANA JULIA UNGERICH - ENG. CIVIL-CREA/SC 105.295-8

ANDRE BRITO DOTTI - ENG. CIVIL-CREA/SC 162.237-5

DENIR NARCIZO ZULIAN - ENG. CIVIL - CREA/SC 50.805-8

LUCAS FELIPE BALESTRIN - ENG. AGRÔNOMO-CREA/SC 156.743-7

MAX MOOSHAMMER - ENG. CIVIL - CREA/SC 139.164-0

Desenho: LUCAS F. BALESTRIN

Data: JUNHO / 2016

Revisão: MAIO / 2020

Projeto: _____

PROJETO GEOMÉTRICO

Trecho

Est. 15+17,20 - 21+0,00

Prancha:

GEO.

03/03